



# MONTHLY MEMBERSHIP PROGRESS REPORT

District 24 D

Results as of: 04/30/2018

GMT: CINDY GREGG

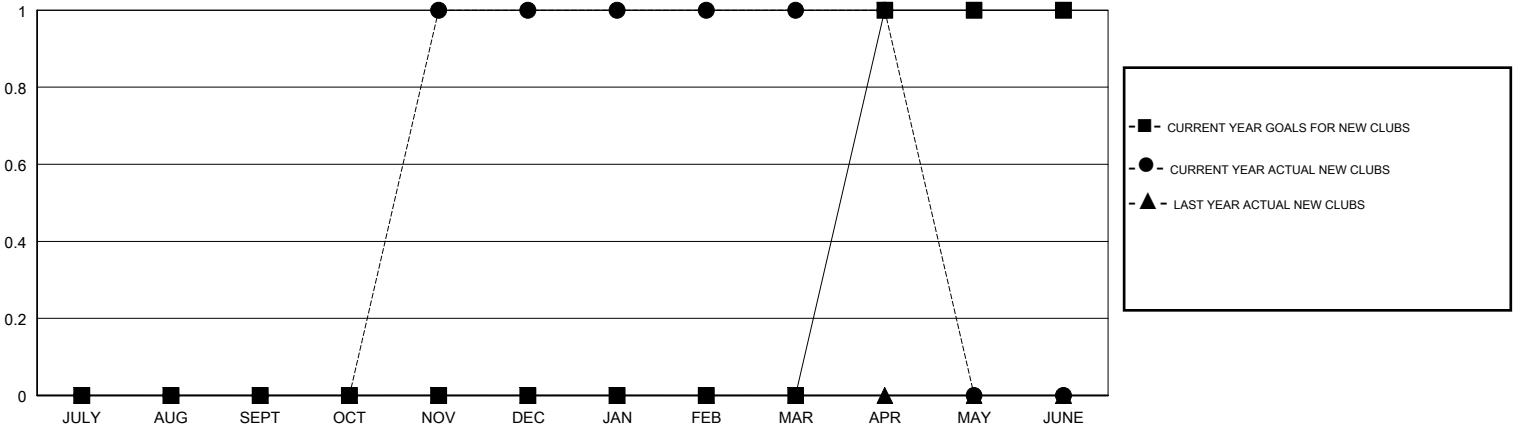
LOCATION VIRGINIA

GMT CA

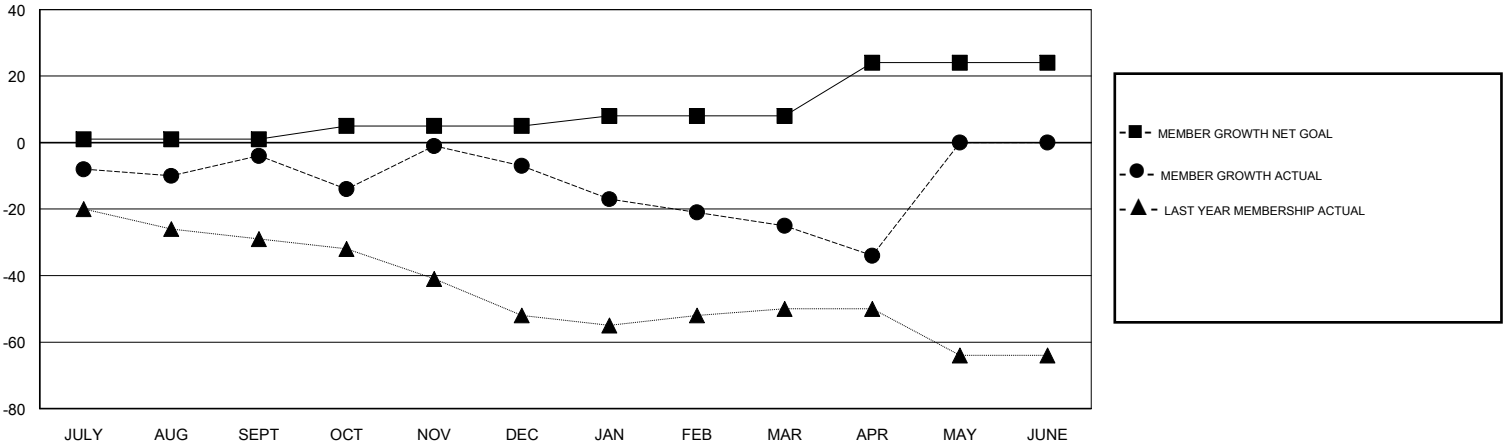
Clubs			
RESULTS FOR 2017-2018			
QUARTER	NEW CLUB GOAL	NEW CLUBS	DROPPED CLUBS
JULY/AUG/SEPT	0	0	0
OCT/NOV/DEC	0	1	0
JAN/FEB/MAR	0	0	0
APR/MAY/JUNE	1	0	0

Members			
RESULTS FOR 2017-2018			
QUARTER	MEMBER GROWTH NET GOAL	MEMBER GROWTH ACTUAL	DROPPED MEMBERS ACTUAL (including transfers)
JULY/AUG/SEPT	1	27	29
OCT/NOV/DEC	4	45	47
JAN/FEB/MAR	3	24	38
APR/MAY/JUNE	16	12	19

GOALS AND ACTUAL NEW CLUBS CUMULATIVE



GOALS AND ACTUAL MEMBERS CUMULATIVE



DROPPED CLUBS: 0
------------------

35 CLUBS OF 57 ADDED 1 OR MORE NEW MEMBERS

GENDER DISTRIBUTION	
MALE	886 (65.00%)
FEMALE	477 (35.00%)
Women Percentage Fiscal Year Goal: 35%	

DROPPED MEMBERS	
DECEASED	23
CLUB CANCELLED	0
OTHER	109
<b>TOTAL</b>	<b>132</b>

[CLICK HERE FOR CUMULATIVE MEMBERSHIP DATA](#)

TOTAL FAMILY UNIT MEMBERS	263
FAMILY MEMBERS PAYING HALF DUES	134